

MODELS	R1	R2
Avg. Arrestance Efficiency	42%	72%
Dust Holding Capacity	67 gm.	100 gm.
Initial Air Flow Resistance	0.02" w.g.	0.05" w.g.

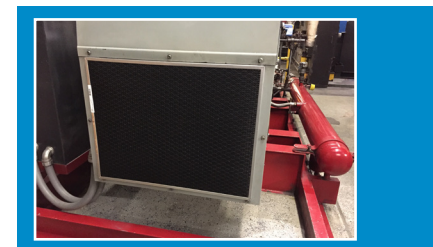
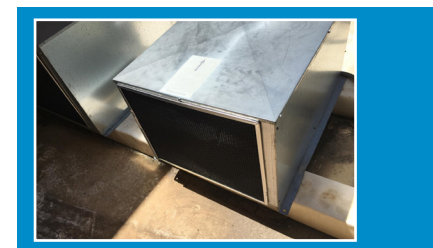
Patent No. US 6,793,715

## FEATURES

Acts as a primary pre-filtration defense to help prevent the damage and extensive maintenance that large volumes of debris can cause. Designed for strength and durability, the air intake filter stands up to outdoor or indoor exposure, corrosive chemicals, high velocity air flow, as well as industrial cleaning and maintenance. Custom designed and manufactured to fit any sized equipment air intake.

## PRODUCT DETAILS

- R-1: Single layer of washable woven electrostatic black honeycomb polypropylene BHC
- R-2: Two layers of BHC
- 1/8" - 5/16" thick galvanized steel frame is standard (stainless steel or aluminum frame, painted black metal frame for an additional cost; painted metal not covered by warranty)
- Can be converted to 1/2" or 1" frame by adding a "C" frame
- \*Wire reinforcement included in filters 650 sq. in. and up; wire support can be added to smaller filters
- Filter can be affixed to unit with magnetic stripping; add pull-tab for easy removal
- UL Classified as to Flammability Only
- UV Protected (black media) and washable
- Model R - 5 Year Warranty
- Magnetic Filter Attachment—2 Year Warranty



*\*No warranty on rigid frame filters over 1,000 sq. in. Cut filter in half to create 2 pieces and use side by side mount bracket z\**